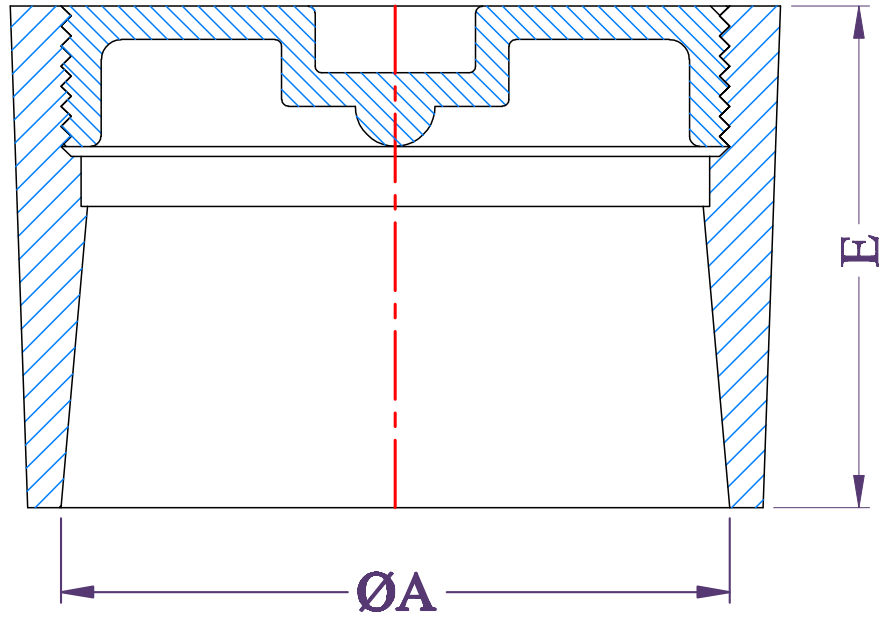




# *Drains*

1<sup>st</sup> issue

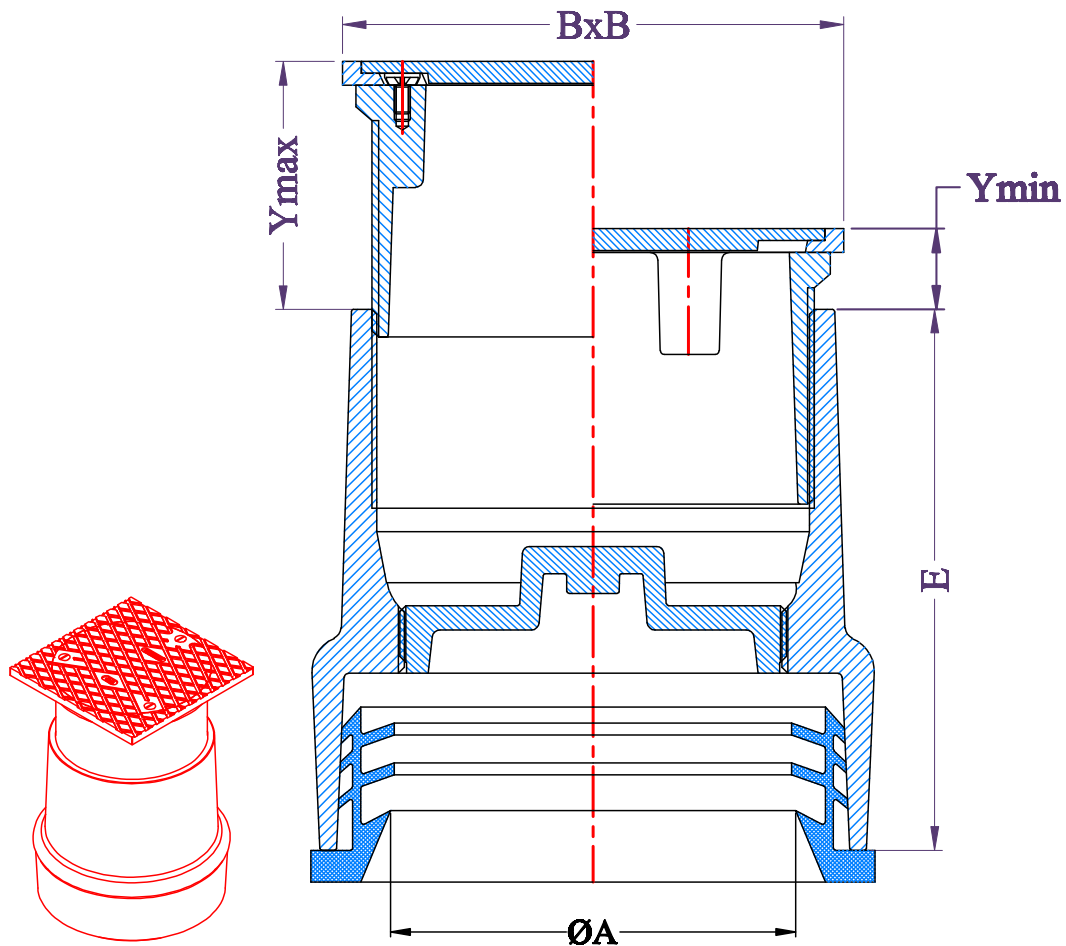




Pipe size[A]	200	150	100	75	50
Body height [E]	89	75	75	70	64
Dimensions in millimeters					

**Engineering specifications:**

Cleanout ferrule with plug [CO]. Epoxy coated cast iron body and threaded plug.

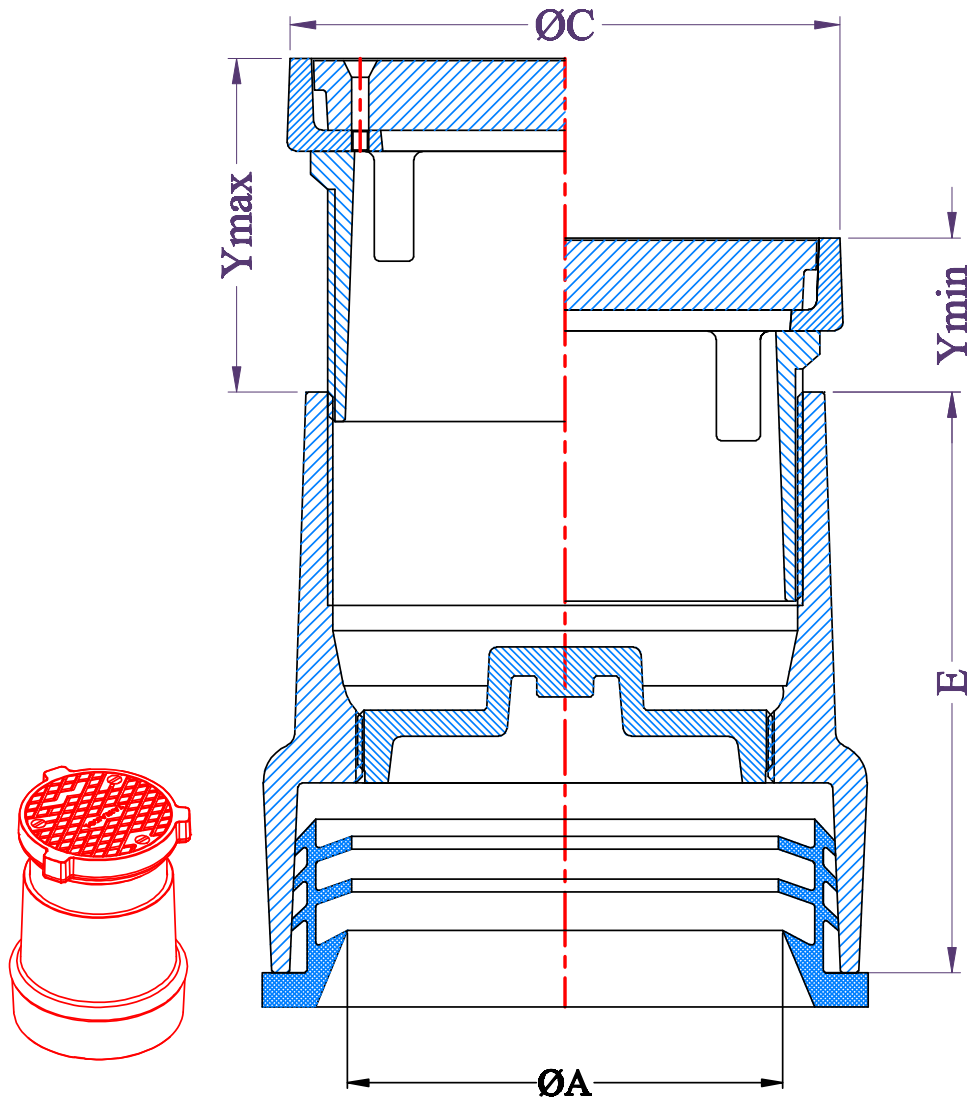


Pipe size ØA	Outlet type	BxB	Body height E	Ymin	Ymax
75	Tee-Seal	130x130	137.5	36	79
100	Tee-Seal	130x130	137.5	36	79

Note: Dimensions in millimeters

#### Engineering Specification:

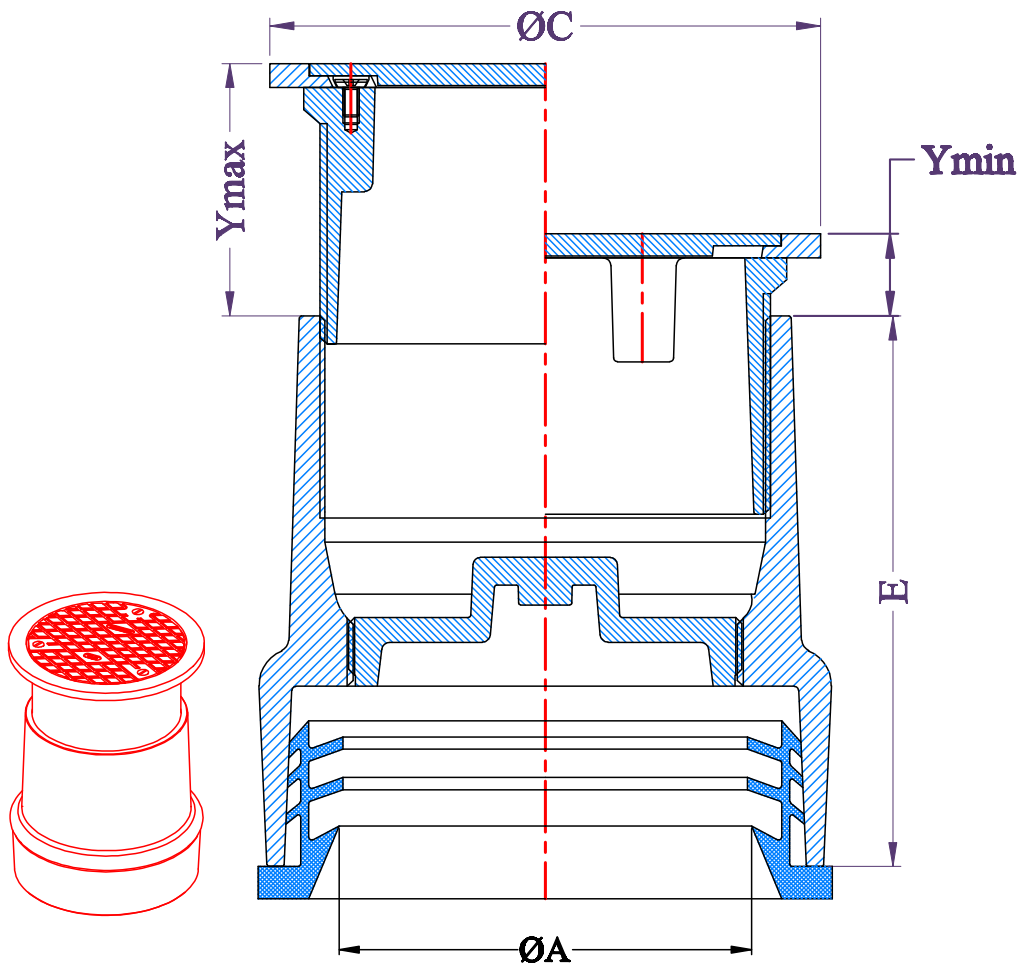
Light duty floor cleanout [FCO1], cast iron body with tapered thread plug and square copper top adjustable to finished floor.



Pipe size ØA	Outlet type	Top dia. ØC	Body height E	Ymin	Ymax
75	Tee-Seal	130	137.5	36	79
100	Tee-Seal	130	137.5	36	79

Note: Dimensions in millimeters

**Heavy Duty Floor Cleanout [FCO2], cast iron body with tapered thread plug and round scoriated secured top adjustable to finished floor.**

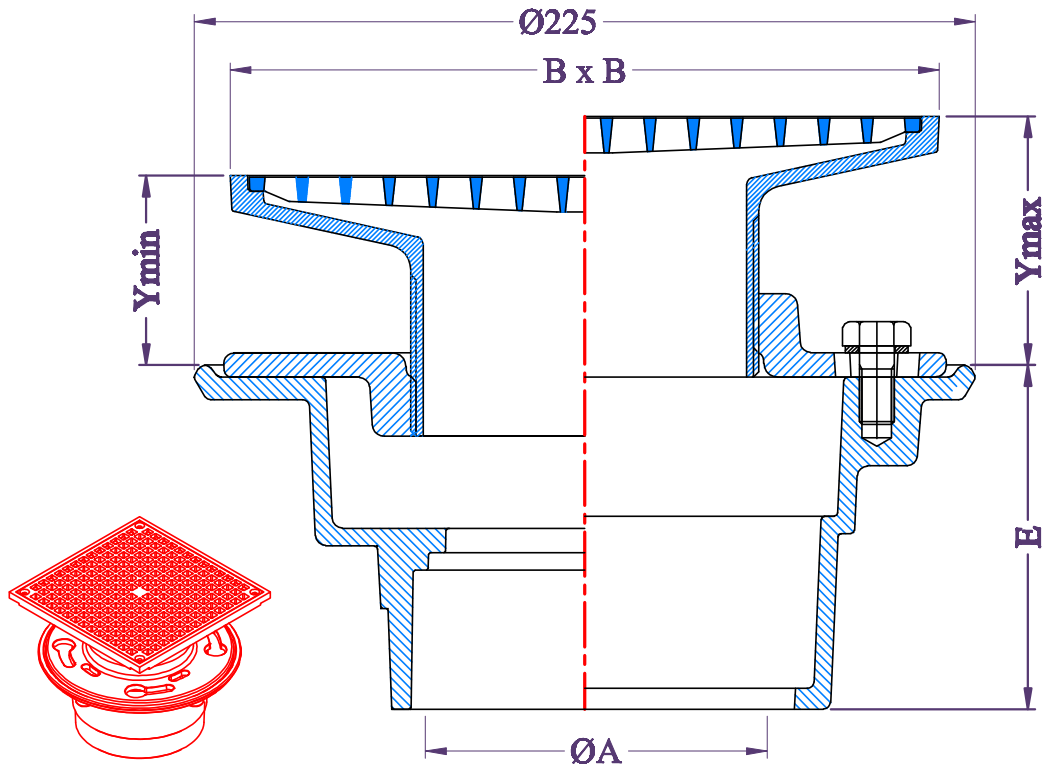


Pipe size ØA	Outlet type	Top dia. ØC	Body height E	Ymin	Ymax
50	Tee-Seal	105	137.5	36	79
75	Tee-Seal	148	137.5	36	79
100	Tee-Seal	148	137.5	36	79
150	Tee-Seal	210	165	25	63

Note: Dimensions are in millimeters

#### Engineering Specification:

Light duty floor cleanout [FCO1], cast iron body with tapered thread plug and round copper top adjustable to finished floor.

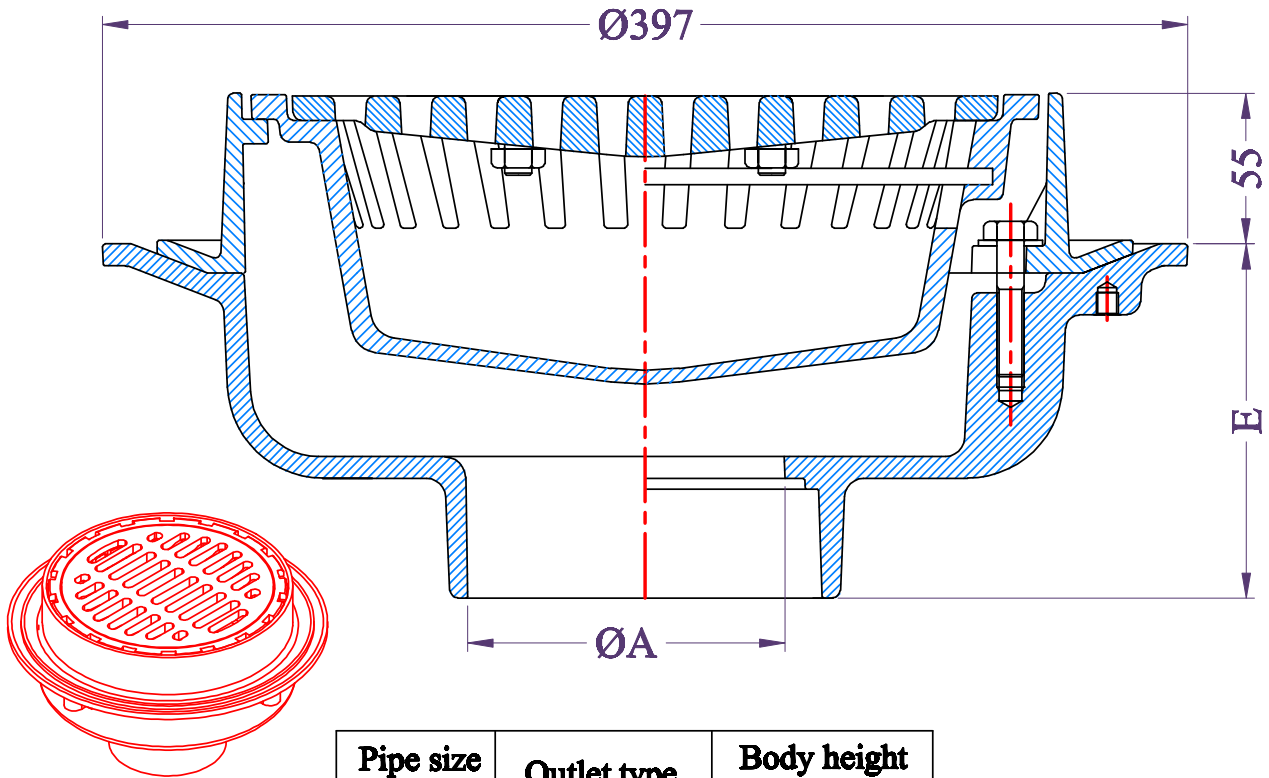


Pipe size ØA	Outlet type	Body height E	Strainer BxB	Ymax	Ymin
50	Tee-Seal	96	200x200	72	55
75	Tee-Seal	96	200x200	72	55
100	Tee-Seal	96	200x200	72	55
100	Inside Gasket	96	200x200	72	55
50	Tee-Seal	96	150x150	72	55
75	Tee-Seal	96	150x150	72	55
100	Tee-Seal	96	150x150	72	55
100	Inside Gasket	96	150x150	72	55

Note: Dimensions in millimeters

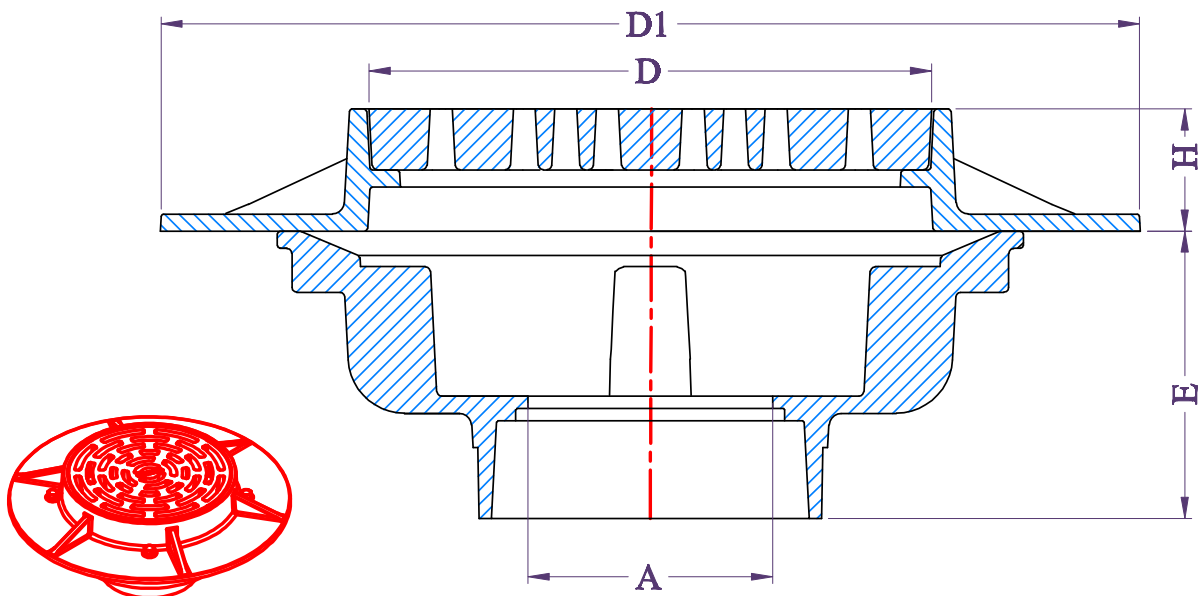
**Engineering Specification:**

**Floor and shower drain [FD1]. Cast iron body with bottom outlet, adjustable collar with "S" type nickel bronze square strainer.**



Pipe size ØA	Outlet type	Body height E
50	Tee-Seal	130
75		
100		
150	No-Hub	135
Note: Dimensions in millimeters		

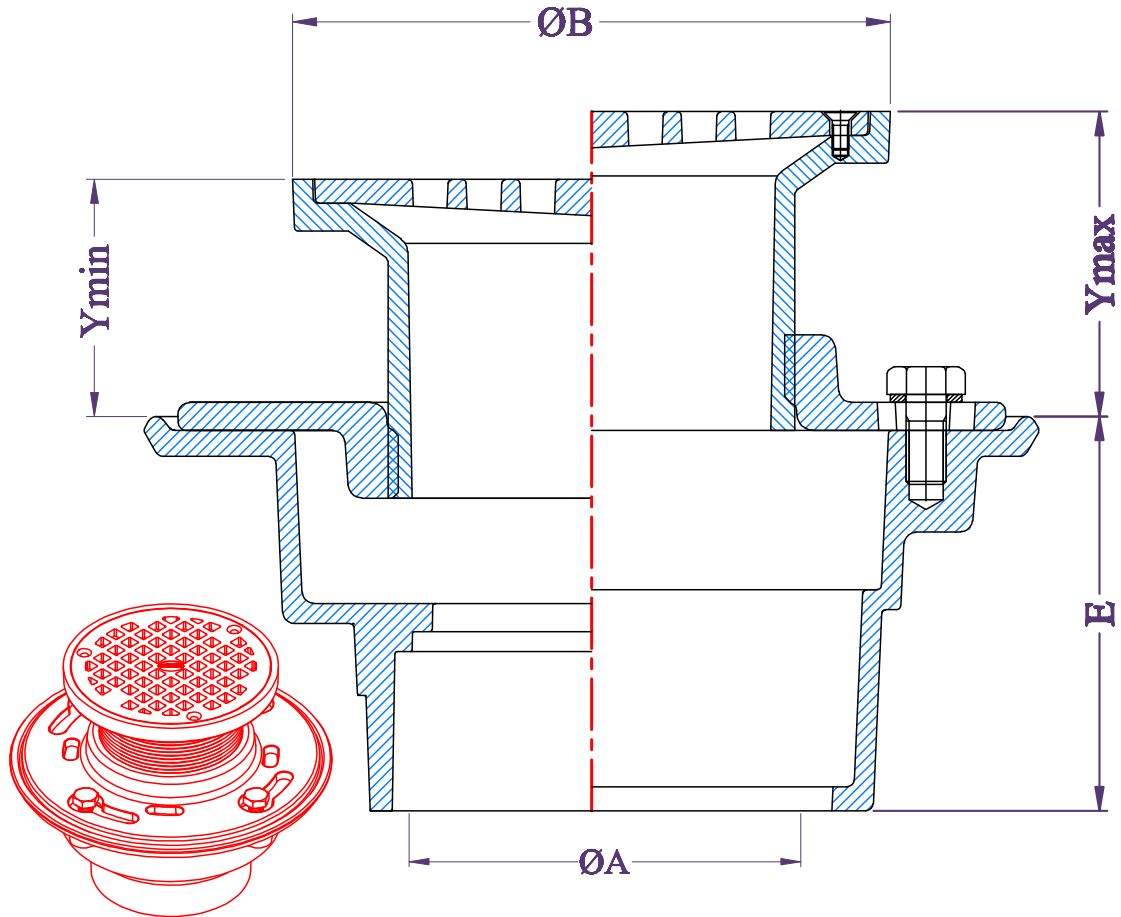
**Engineering specification:**  
**Heavy duty floor drain [FD2], Cast iron body with bottom outlet, frame, bucket and slotted grate.**



Pipe size A	Outlet type.	Body height. E	Grate height. H	Grate dia D	Flange Dia. D1
50	Tee - seal	117.5	50	230	400
75					
100					
<b>Note: Dimensions in millimeters</b>					

**Engineering specification :**  
**Parking deck drains (FD4) consists of gray cast iron body with bottom outley , heavy duty support flange and heavy duty slotted grate .**

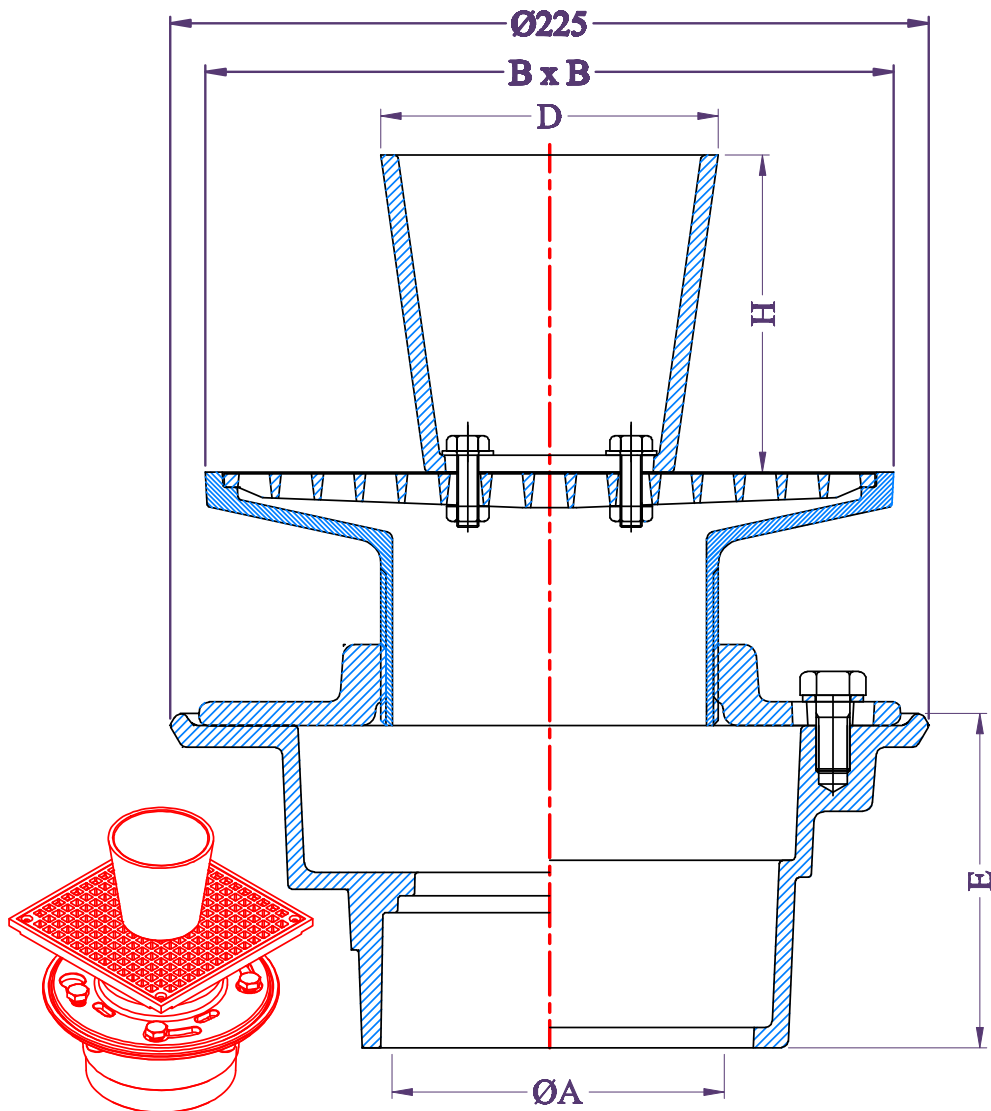




Pipe size ØA	Outlet type	Strainer dia. ØB	Body height E
50	Tee-Seal	150	96
75	Tee-Seal		
100	Tee-Seal		
100	Inside gasket		
Note: Dimensions in millimeters			

#### Engineering specifications:

Shower drain [FD1], Consists of cast iron body, collar and round flat strainer [Type B] adjustable with the collar.

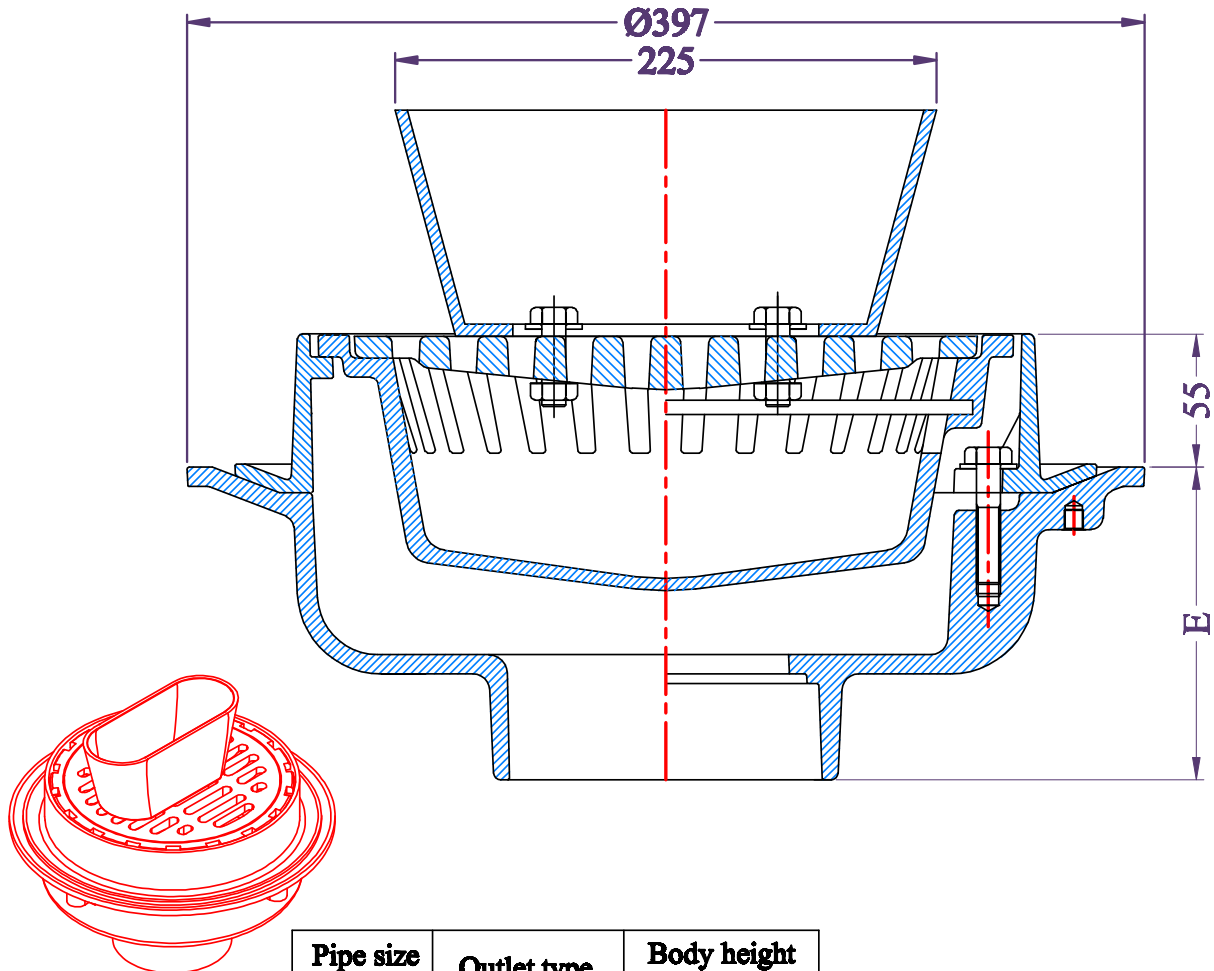


Pipe size ØA	Outlet type	Body height E	Strainer BxB	Funnel height H	Funnel dia. D
50	Tee-Seal	96	200x200	94	100
75	Tee-Seal	96	200x200	94	100
100	Tee-Seal	96	200x200	94	100
100	Inside Gasket	96	200x200	94	100
50	Tee-Seal	96	150x150	94	100
75	Tee-Seal	96	150x150	94	100
100	Tee-Seal	96	150x150	94	100
100	Inside Gasket	96	150x150	94	100

Note: Dimensions in millimeters

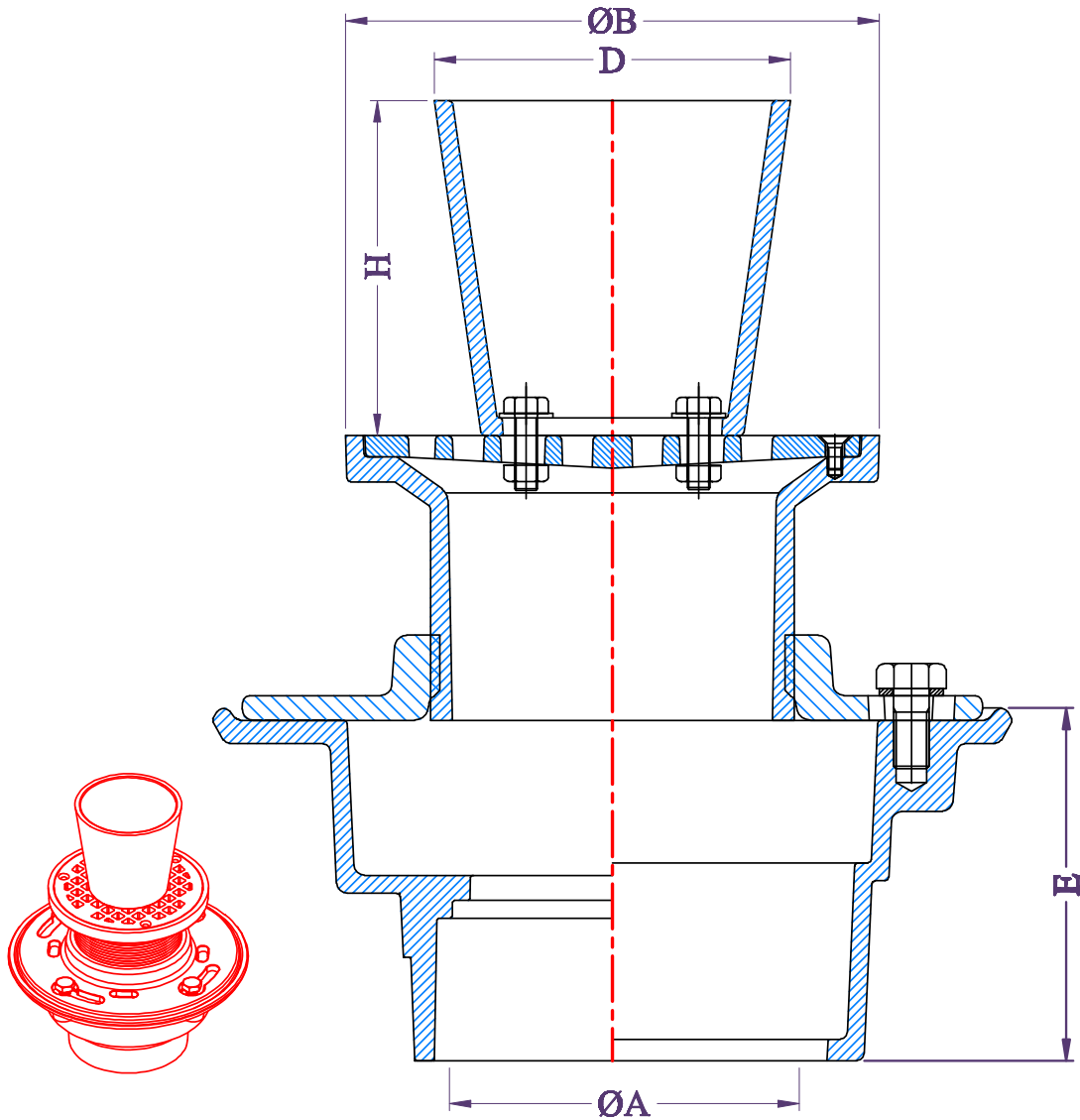
**Engineering specifications:**

Floor drain with round funnel [FFD1], consists of cast iron body, cast iron collar, nickel bronze [ type S] strainer and cast iron round funnel. Cast iron parts are coated with epoxy.



Pipe size ØA	Outlet type	Body height E
50	Tee-Seal	130
75		
100		
150	No-Hub	135
Note: Dimensions in millimeters		

**Engineering specification:**  
**Heavy duty floor drain [FFD2], cast iron body with bottom outlet, frame, ductile iron bucket, ductile iron slotted grate and cast iron funnel.**

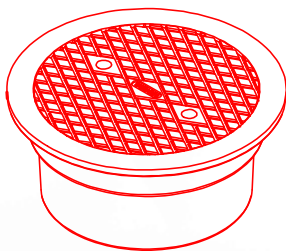
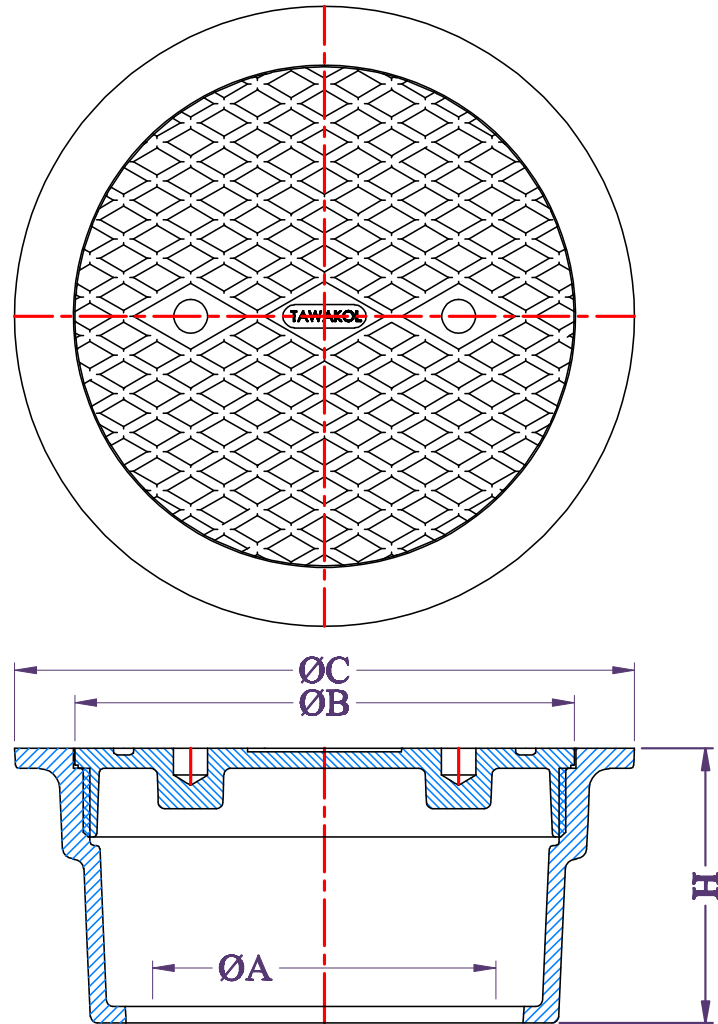


Pipe size ØA	Outlet type	Strainer dia. ØB	Body height E	Funnel height H	Funnel dia. D
50	Tee-Seal	150	96	94	100
75	Tee-Seal				
100	Tee-Seal				
100	Inside gasket				

Note: Dimensions in millimeters

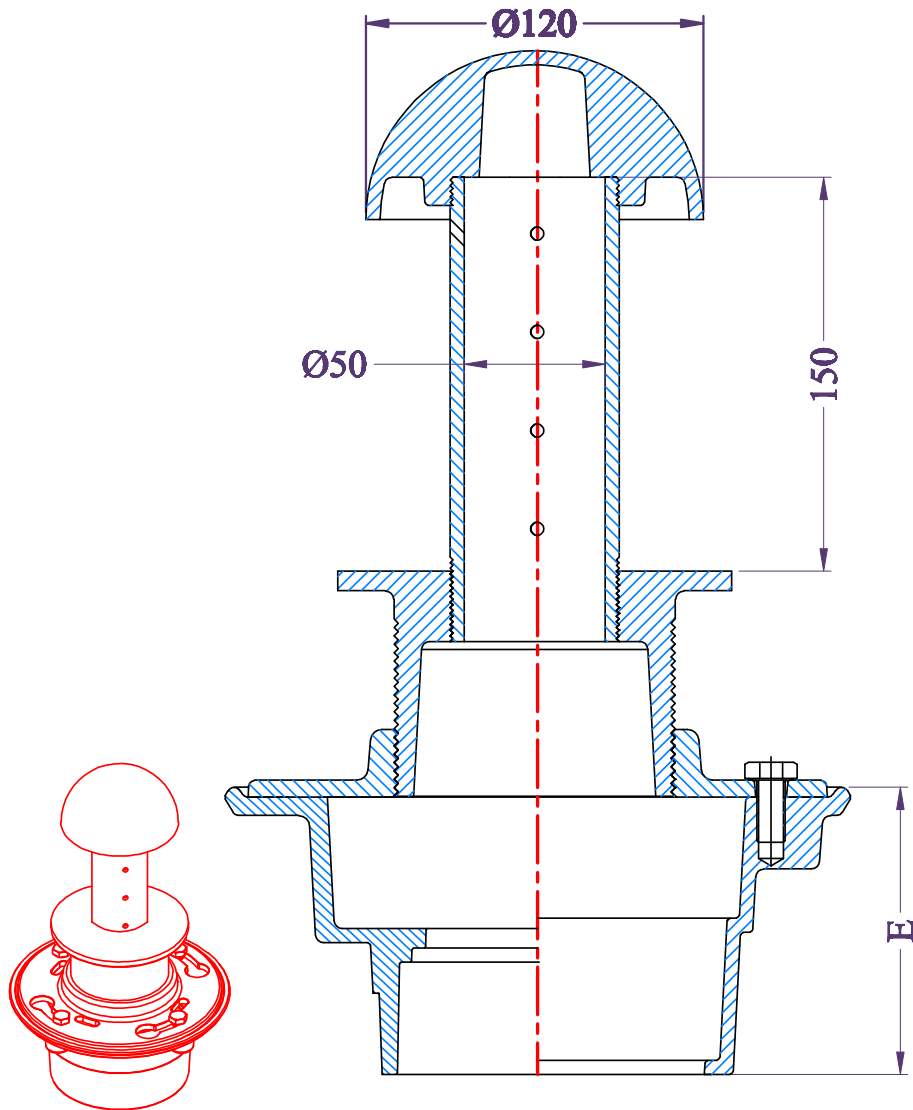
**Engineering specifications:**

Floor drain with round funnel [FFD1], consists of cast iron body, cast iron collar, nickel bronze strainer [type B] and cast iron round funnel. Cast iron parts are coated with epoxy.



Outlet size [ØA]	100
Cover dia [ØB]	150
Body dia [ØC]	185
Height [H]	82
Outlet type	Inside gasket
Note: Dimensions in millimeters	

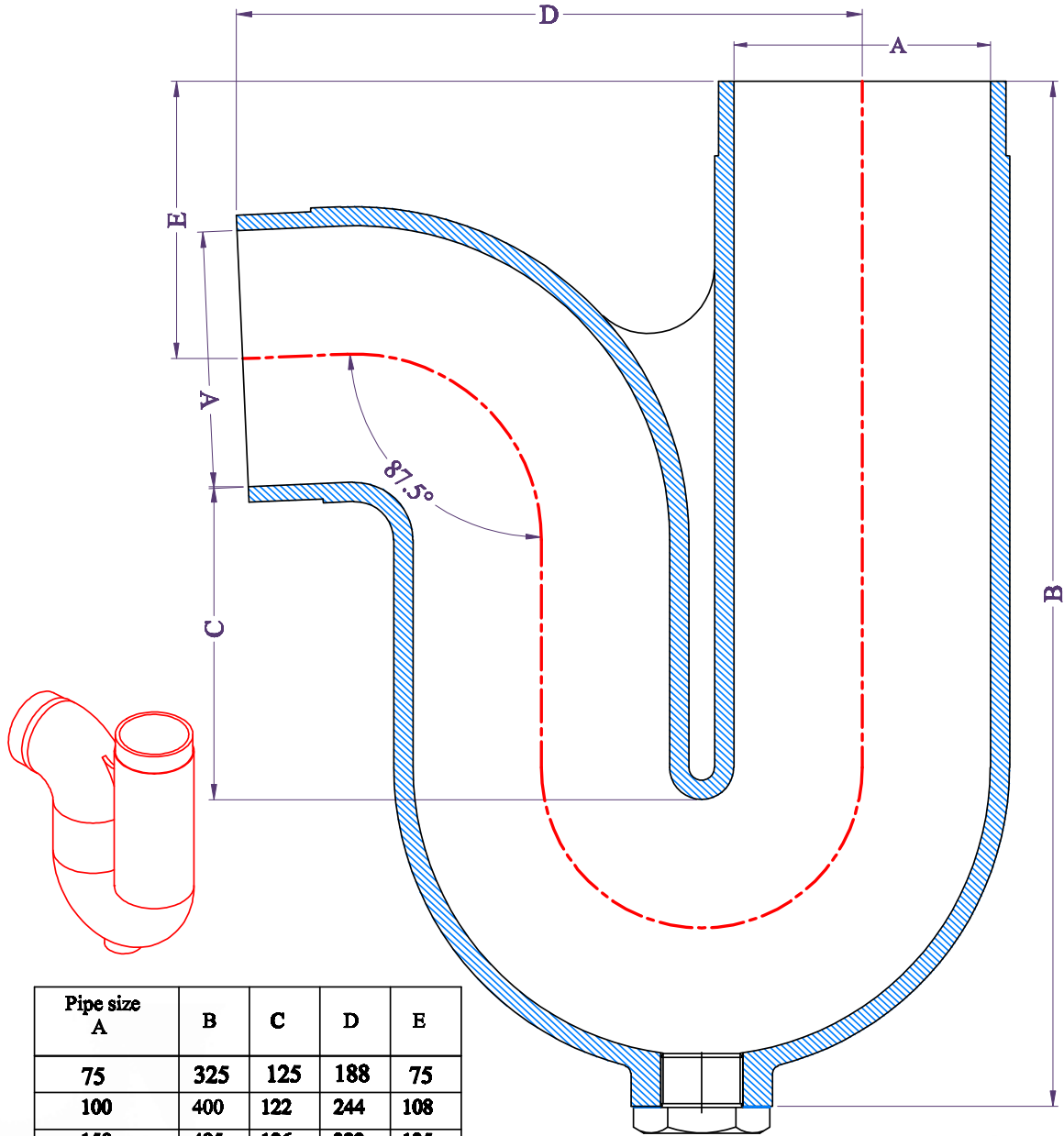
**Engineering specifications:**  
Ground clean out [GCO1], Cast iron body and ductile iron cover.



Pipe size ØA	Outlet type	Body height E
50	Tee-Seal	96
75	Tee-Seal	96
100	Tee-Seal	96
100	Inside Gasket	96
Note: Dimensions in millimeters		

**Engineering Specification:**

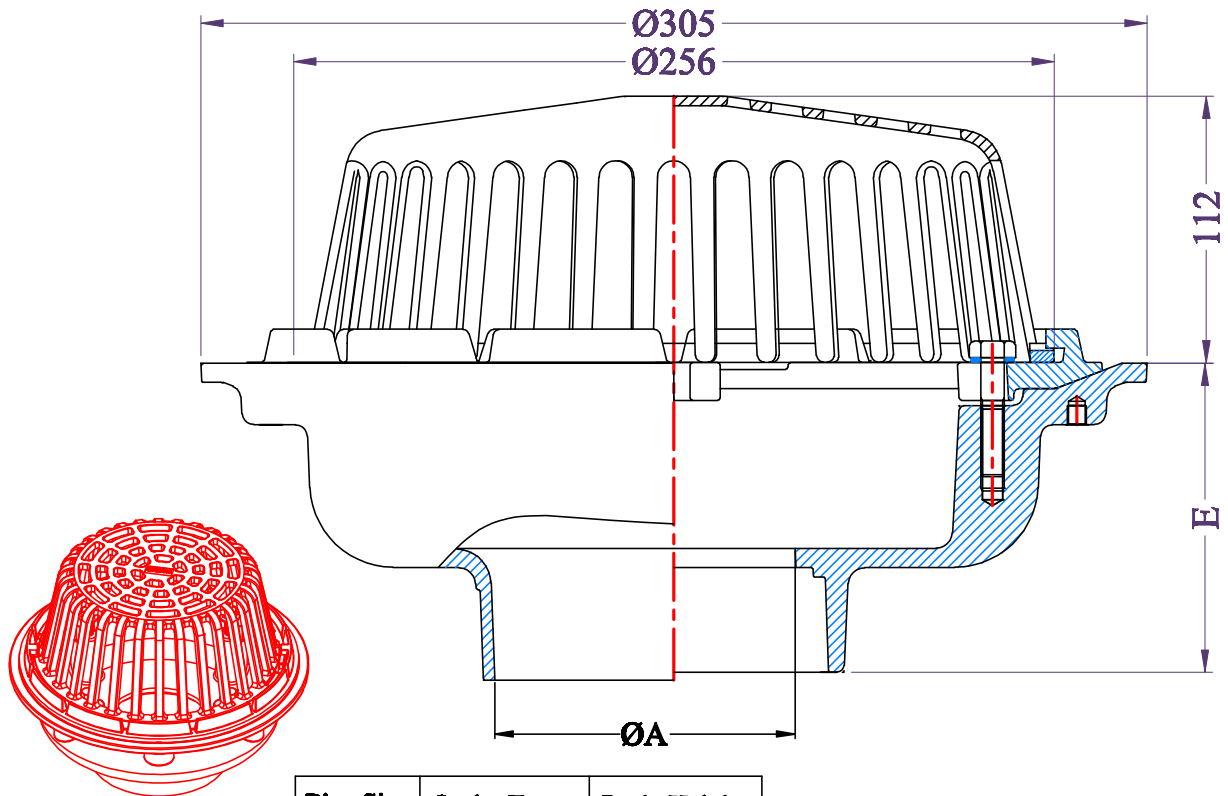
Planter drain [PD1], consists of cast iron body, cast iron collar and combination of nickel bronze clamp, stand pipe and dome



Pipe size A	B	C	D	E
75	325	125	188	75
100	400	122	244	108
150	495	126	322	135

Dimension in millimeters

**Engineering specification:**  
Deep seal trap, epoxy zinc painted cast iron body.

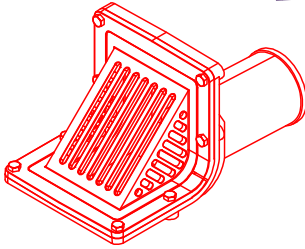
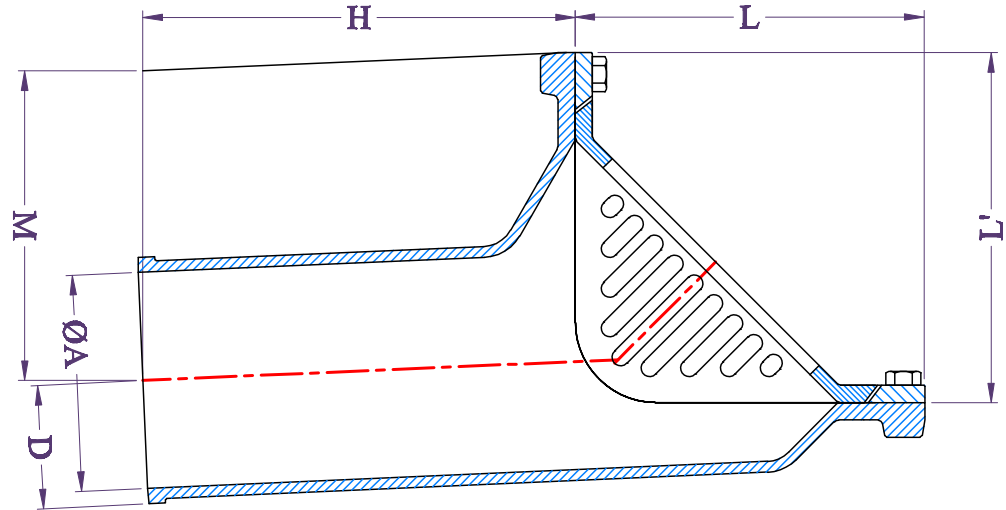


Pipe Size ØA	Outlet Type	Body Height E
50	Tee-Seal	117.5
75	Tee-Seal	
100	Tee-Seal	
150	No-Hub	135

Note: Dimensions in millimeters

**Engineering specifications:**  
Roof drain low Silhouette dome, cast iron body, frame and dome.



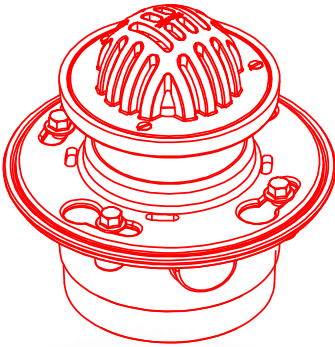
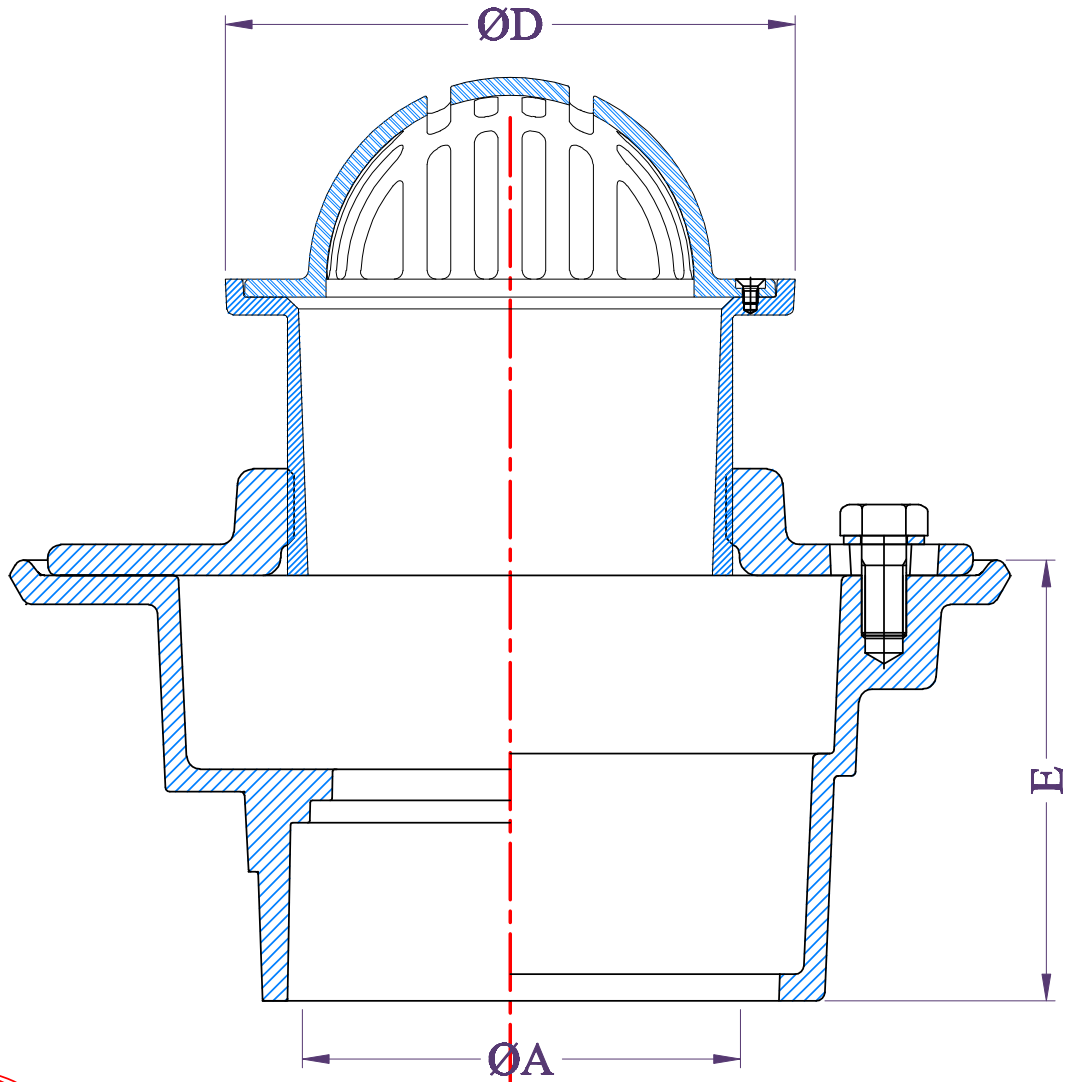


Pipe size A	width B	D	H	L	L'	M
100	190.5	57	200	162	162	143
75	190.5	44	200	162	162	160
50	190.5	31.5	200	162	162	168

Dimensions in millimeters

**Engineering specifications:**

**Scupper drain [RD2], Cast iron body with reversable outlet, oblique grate with 90° combination frame and membrane flashing clamp.**

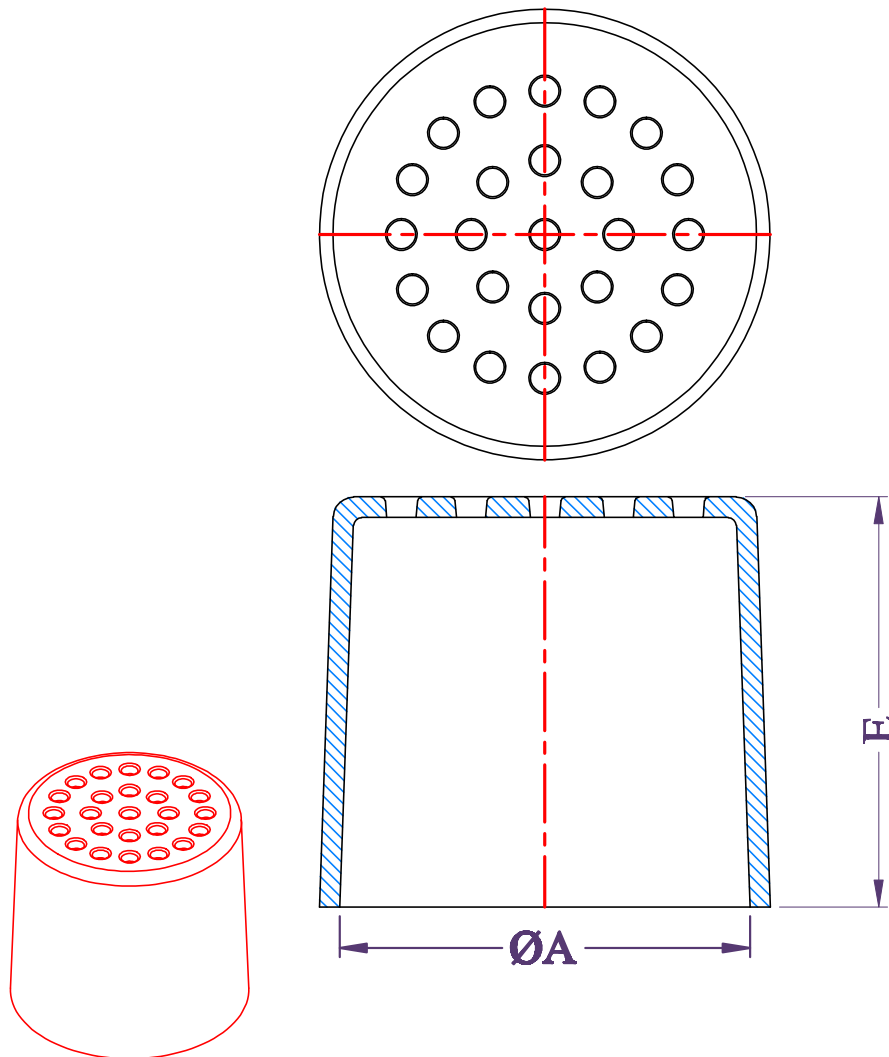


Pipe size ØA	Outlet type	Strainer dia. ØD	Body height E
50	Tee-Seal	150	96
75	Tee-Seal		
100	Tee-Seal		
100	Inside Gasket	200	96
150	Inside Gasket		

**Note: Dimensions in millimeters**

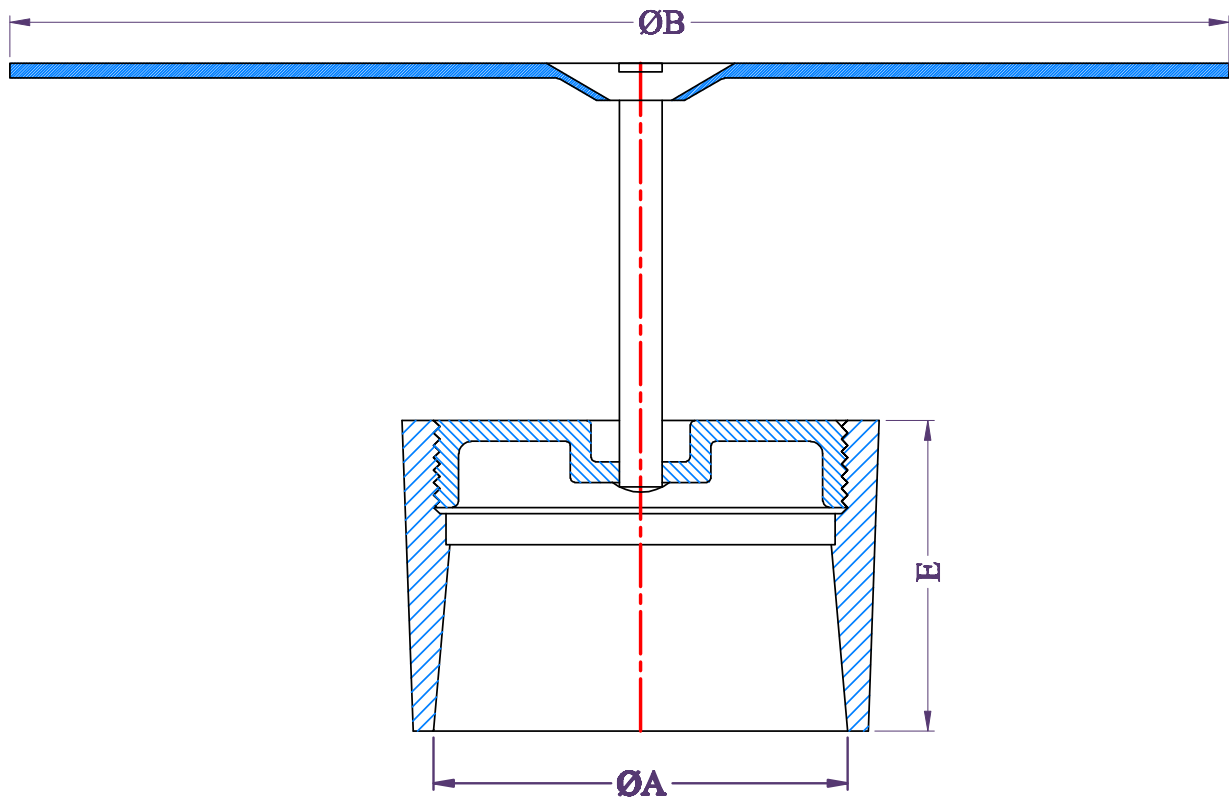
**Engineering specifications:**

Trench drain [TD1], consists of cast iron body, collar and nickel bronze dome strainer adjustable with the collar.



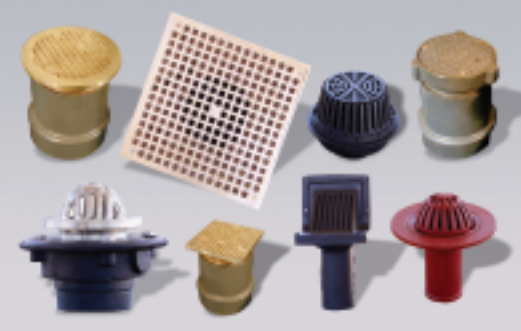
Pipe size ØA	Body height E
150	150
100	100
75	100
50	80
Note: Dimensions in millimeters	

**Engineering specification:**  
Cast iron simple design vent cap with epoxy coating.



Pipe size[A]	200	150	100	75	50
Body height [E]	89	75	75	70	64
B	275	220	180	120	120
Dimensions in millimeters					

**Engineering specifications:**  
Cleanout ferrule with plug [WCO]. Epoxy coated cast iron body and threaded plug, and round, smooth stainless steel access cover with securing screw.



### **Head office**

38 El Thawra St. Heliopolis, Cairo, Egypt  
11431

Tel : 002-02-2291 0414

Fax : 002-02-2290 1150

E-mail : [info@tawakol.com.eg](mailto:info@tawakol.com.eg)  
Website : [www.tawakol.com.eg](http://www.tawakol.com.eg)